



Bicyclists Bring Business Roundtable



**Schenectady
September 15, 2015**

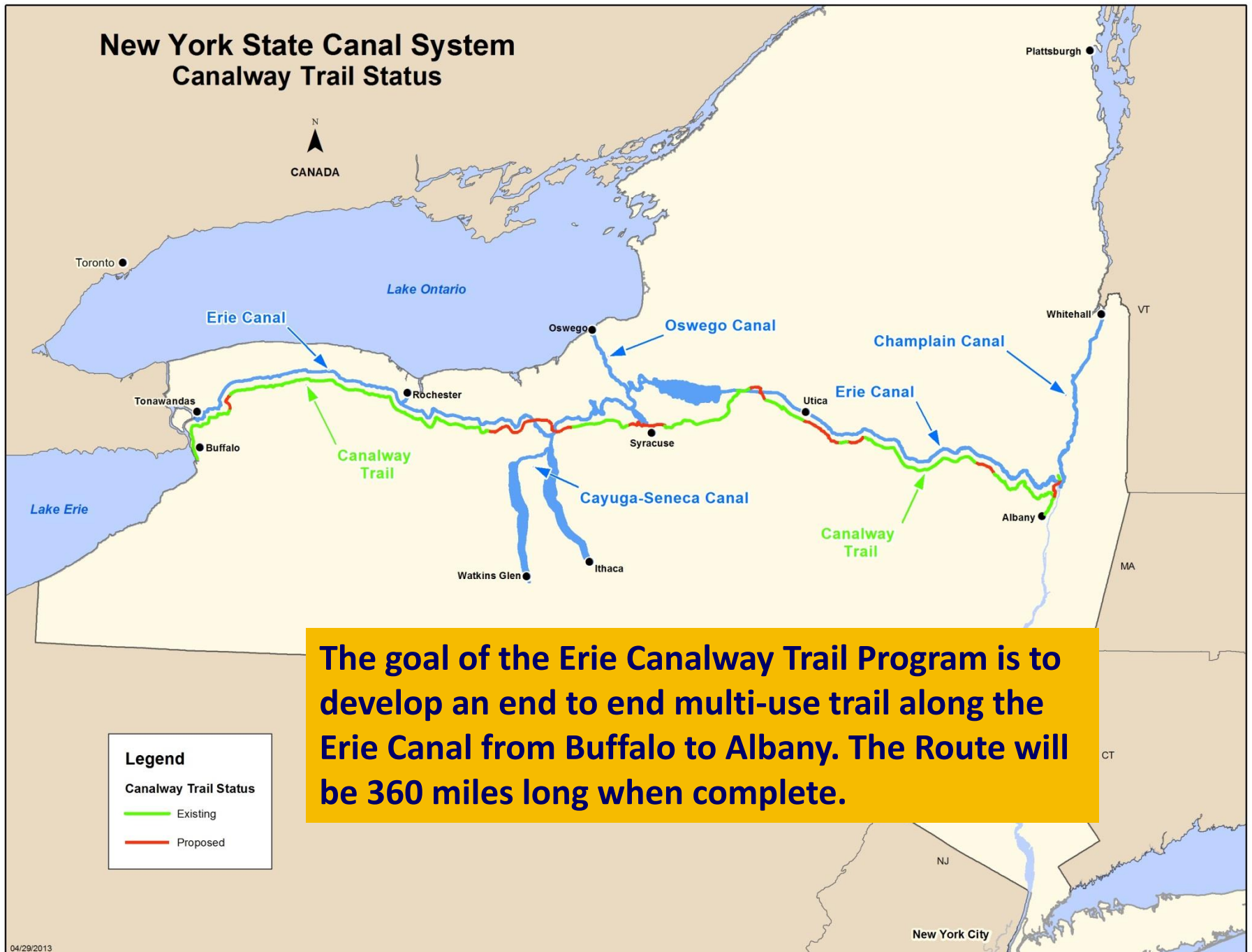
The Erie Canalway Trail Today



**John DiMura, Trails Director
New York State Canal Corporation**



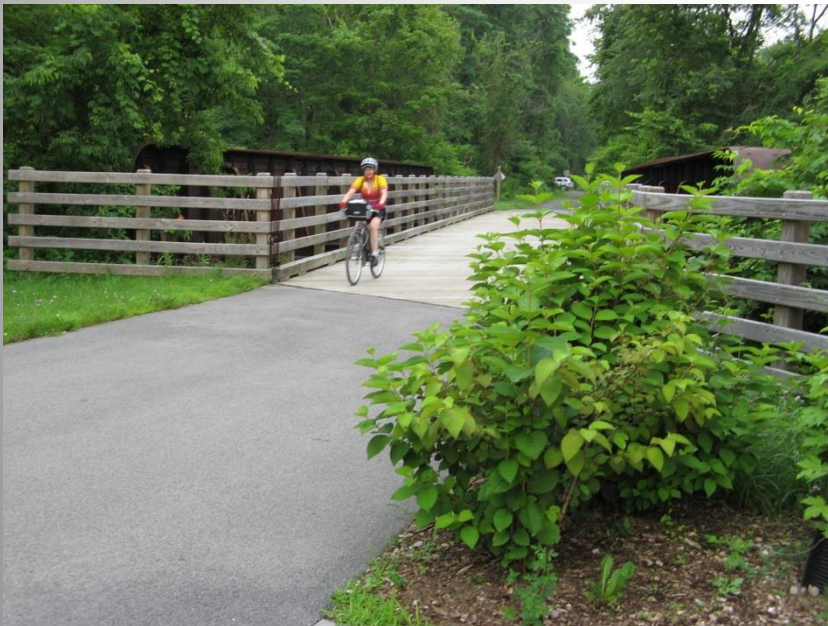
New York State Canal System Canalway Trail Status



Canal Recreationway Plan 1995

- Canalway Trail
- Canal Harbors
- Canal Service Ports and Locks
- Marketing and Promotion
- Interpretation





Trail Surface



Standard trail is 10 feet wide with stone dust or asphalt surface

Canalway Trail Uses

- Walking
- Jogging
- Bicycling
- In-Line Skating
- X Country Skiing
- Snowmobiling (in some locations)
- Fishing Access
- Equestrian (Old Erie Canal SP)



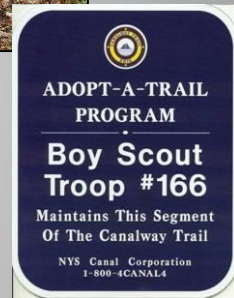
Canalway Trail Related Events

- Canal Clean Sweep - April
- Our Ability Tour - June
- Cycle the Erie Canal - July
- Canal Splash! - August



Volunteer Participation

- Canalway Trails Association New York (CTANY)
- The Adopt-a-Trail Program
- Canalway Trail Ambassadors



Canalway Trail Signs

- Consistent wayfinding and interpretive signage is being installed along the trail
- Reinforces connected system





Trail Blazers and Logo Help “Brand” the Canalway Trail

Closing the Gaps

Over 100 miles of new Erie Canalway Trail completed since 1995

Recent Projects:

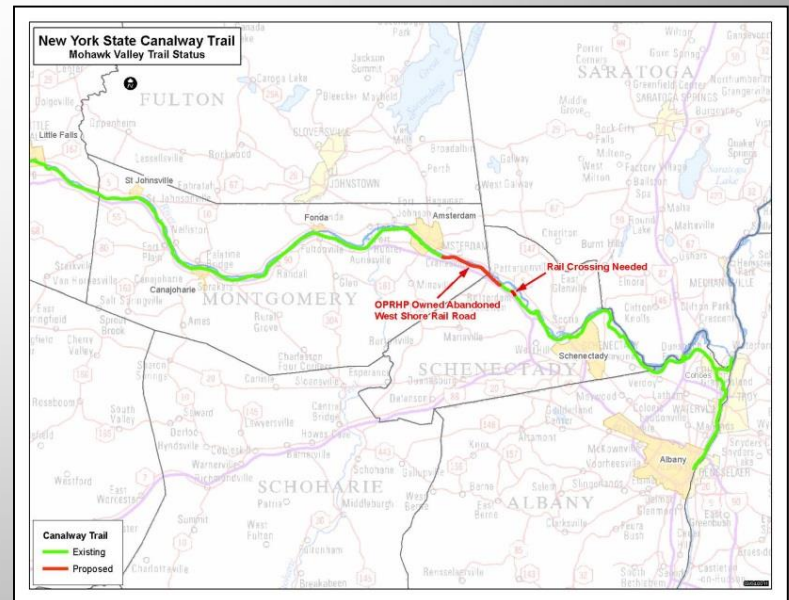
- **2013 Lyons and Little Falls – 1 mile each**
- **2013 Arcadia - Newark to Lyons - 6 miles**
- **2014 City of Rome - 3 miles**
- **2015 Lockport to Amherst Phase I - 4 miles**



Closing the Gaps

Funded Projects:

- Lockport to Amherst Phase II
- 3 miles (2016)
- Pattersonville to Amsterdam
- 4 miles (State Parks 2016)
- German Flatts to Lock 18 -
2 miles (TAP funded 2017)
- Utica to Schuyler - 6 miles
(2018)



Closing the Gaps - Challenges

- **Suitable Publicly Owned Rights-of-Way**
- **Physical Constraints such as water bodies, wetlands or railroad and highway crossings**
- **FUNDING**



Erie Canalway Trail Rehabilitation

Over 100 miles of Erie Canalway Trail have been upgraded since 1995.

Recent Projects:

- **2010 City of Schenectady
(3 miles)**
- **2014 Pittsford to Fairport
(8 miles)**



Partnerships with Municipalities

Smaller Successes - Large Impact

- **Canal Road Adams Basin**
- **Pittsford Maintenance Shops**
- **Cobb's Lane – Perinton**
- **Whitbeck Road - Arcadia**

Canal Road – Adams Basin



Pittsford Maintenance Shops



Cobbs Lane - Perinton



Whitbeck Road - Arcadia

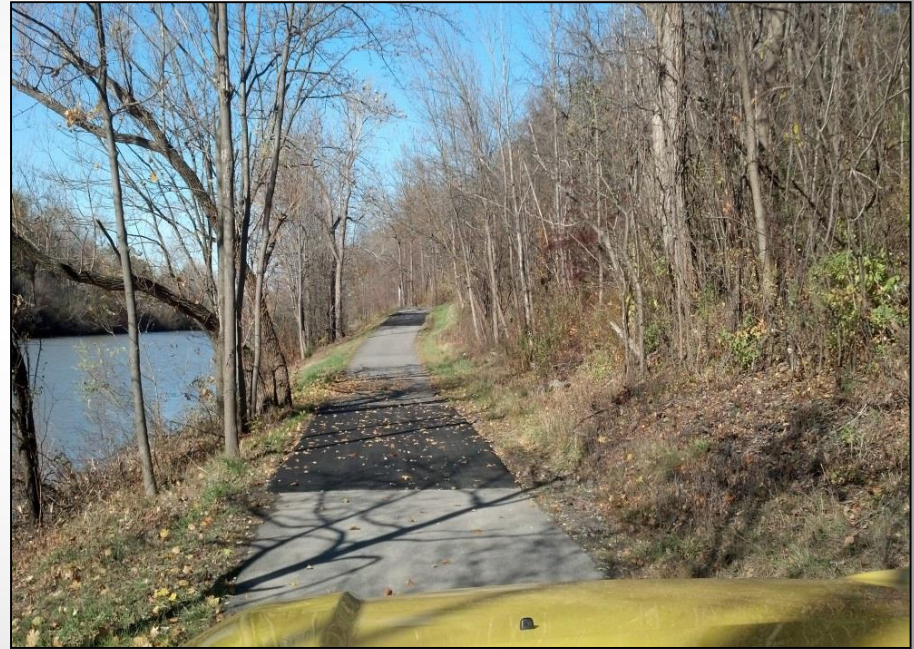


Annual Canalway Trail Spot Improvements



Macedon

Annual Canalway Trail Spot Improvements



Brighton

The Erie Canalway Trail – Going Forward

- Complete the gaps
- Improve surface condition
- Consistent signage
- Continue partnerships with other agencies, municipalities and non-profits
- Pursue grants through the CFA and federal TAP
- Increase participation in trail related events and activities





WARNING
WALK BIKES
TO
LOWER LEVEL

John DiMura
518-436-3034
John.dimura@canals.ny.gov
NYS Canal Corporation
www.canals.ny.gov